

## Product datasheet for **TA359990**

### PSRC1 Rabbit Polyclonal Antibody

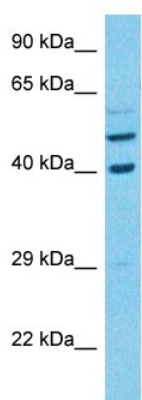
#### Product data:

Product Type:	Primary Antibodies
Applications:	WB
Reactivity:	Human
Host:	Rabbit
Clonality:	Polyclonal
Immunogen:	The immunogen is a synthetic peptide directed towards the C-terminal region of Human PSRC1
Specificity:	<b>Expected reactivity:</b> Human
Formulation:	Liquid. Purified antibody supplied in 1x PBS buffer with 0.09% (w/v) sodium azide and 2% sucrose. <i>Note that this product is shipped as lyophilized powder to China customers.</i>
Concentration:	lot specific
Purification:	Affinity purified
Conjugation:	Unconjugated
Storage:	For short term use, store at 2-8°C up to 1 week. For long term storage, store at -20°C in small aliquots to prevent freeze-thaw cycles.
Stability:	Shelf life: one year from despatch.
Predicted Protein Size:	39kDa
Gene Name:	proline and serine rich coiled-coil 1
Database Link:	<a href="#">Entrez Gene 84722 Human</a> <a href="#">Q6PGN9</a>
Background:	This gene encodes a proline-rich protein that is a target for regulation by the tumor suppressor protein p53. The encoded protein plays an important role in mitosis by recruiting and regulating microtubule depolymerases that destabilize microtubules. Alternatively spliced transcript variants encoding different isoforms have been described.
Synonyms:	DDA3; FP3214; MGC1780; OTTHUMP00000205834; OTTHUMP00000205835; OTTHUMP00000205836



[View online »](#)

## Product images:



Host: Rabbit  
Target Name: PSRC1  
Sample Tissue: 786-0 Cell Lysate  
Antibody Dilution: 1.0 $\mu$ g/ml

Host: Rabbit  
Target Name: PSRC1  
Sample Type: 786-0 Whole Cell lysates  
Antibody Dilution: 1.0 $\mu$ g/ml