

Product datasheet for **TA359988**

SCIN Rabbit Polyclonal Antibody

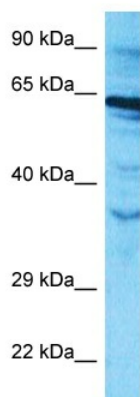
Product data:

Product Type:	Primary Antibodies
Applications:	WB
Reactivity:	Human
Host:	Rabbit
Clonality:	Polyclonal
Immunogen:	The immunogen is a synthetic peptide directed towards the middle region of Human ADSV
Specificity:	Expected reactivity: Human
Formulation:	Liquid. Purified antibody supplied in 1x PBS buffer with 0.09% (w/v) sodium azide and 2% sucrose. <i>Note that this product is shipped as lyophilized powder to China customers.</i>
Concentration:	lot specific
Purification:	Affinity purified
Conjugation:	Unconjugated
Storage:	For short term use, store at 2-8°C up to 1 week. For long term storage, store at -20°C in small aliquots to prevent freeze-thaw cycles.
Stability:	Shelf life: one year from despatch.
Predicted Protein Size:	63kDa
Gene Name:	scinderin
Database Link:	Entrez Gene 85477 Human Q9Y6U3-2
Background:	SCIN is a Ca(2+)-dependent actin-severing and -capping protein (Zunino et al., 2001 [PubMed 11568009]).[supplied by OMIM, May 2010]
Synonyms:	adseverin; KIAA1905; Scinderin



[View online »](#)

Product images:



Host: Rabbit
Target Name: ADSV
Sample Tissue: A549 Cell Lysate
Antibody Dilution: 1.0 μ g/ml

Host: Rabbit
Target Name: ADSV
Sample Type: A549 Whole Cell lysates
Antibody Dilution: 1.0ug/ml