

## Product datasheet for **TA359977**

### THAP7 Rabbit Polyclonal Antibody

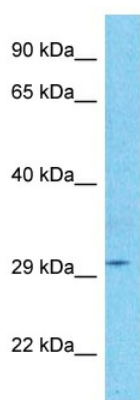
#### Product data:

Product Type:	Primary Antibodies
Applications:	WB
Reactivity:	Human
Host:	Rabbit
Clonality:	Polyclonal
Immunogen:	The immunogen is a synthetic peptide directed towards the C-terminal region of Human THAP7
Specificity:	<b>Expected reactivity:</b> Human
Formulation:	Liquid. Purified antibody supplied in 1x PBS buffer with 0.09% (w/v) sodium azide and 2% sucrose. <i>Note that this product is shipped as lyophilized powder to China customers.</i>
Concentration:	lot specific
Purification:	Affinity purified
Conjugation:	Unconjugated
Storage:	For short term use, store at 2-8°C up to 1 week. For long term storage, store at -20°C in small aliquots to prevent freeze-thaw cycles.
Stability:	Shelf life: one year from despatch.
Predicted Protein Size:	33kDa
Gene Name:	THAP domain containing 7
Database Link:	<a href="#">NP_085050</a> <a href="#">Entrez Gene 80764 Human Q9BT49</a>
Background:	Chromatin-associated, THAP7 is a histone tail-binding protein that represses transcription via recruitment of HDAC3 and nuclear hormone receptor corepressors.
Synonyms:	MGC10963



[View online »](#)

Product images:



Host: Rabbit  
Target Name: THAP7  
Sample Tissue: 293T Cell Lysate  
Antibody Dilution: 1.0µg/ml

Host: Rabbit  
Target Name: THAP7  
Sample Type: 293T Whole Cell lysates  
Antibody Dilution: 1.0ug/ml