

Product datasheet for **TA359975**

NARG1 (NAA15) Rabbit Polyclonal Antibody

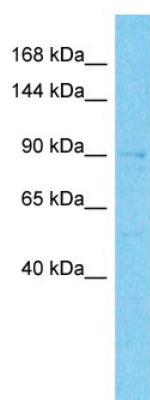
Product data:

Product Type:	Primary Antibodies
Applications:	WB
Reactivity:	Human
Host:	Rabbit
Clonality:	Polyclonal
Immunogen:	The immunogen is a synthetic peptide directed towards the middle region of Human NAA15
Specificity:	Expected reactivity: Human
Formulation:	Liquid. Purified antibody supplied in 1x PBS buffer with 0.09% (w/v) sodium azide and 2% sucrose. <i>Note that this product is shipped as lyophilized powder to China customers.</i>
Concentration:	lot specific
Purification:	Affinity purified
Conjugation:	Unconjugated
Storage:	For short term use, store at 2-8°C up to 1 week. For long term storage, store at -20°C in small aliquots to prevent freeze-thaw cycles.
Stability:	Shelf life: one year from despatch.
Predicted Protein Size:	95kDa
Gene Name:	N(alpha)-acetyltransferase 15, NatA auxiliary subunit
Database Link:	NP_476516 Entrez Gene 80155 Human Q9BXI9
Background:	This gene encodes a protein of unknown function. However, similarity to proteins in yeast and other species suggests that this protein may be an N-acetyltransferase.
Synonyms:	Ga19; NARG1; NATH; TBDN100



[View online »](#)

Product images:



Host: Rabbit
Target Name: NAA15
Sample Tissue: 293T Cell Lysate
Antibody Dilution: 1.0µg/ml

Host: Rabbit
Target Name: NAA15
Sample Type: 293T Whole Cell lysates
Antibody Dilution: 1.0ug/ml