

## Product datasheet for **TA359967**

### TTC21B Rabbit Polyclonal Antibody

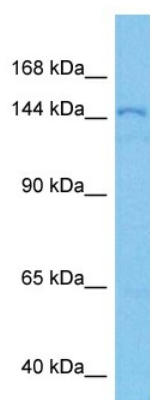
#### Product data:

Product Type:	Primary Antibodies
Applications:	WB
Reactivity:	Human
Host:	Rabbit
Clonality:	Polyclonal
Immunogen:	The immunogen is a synthetic peptide directed towards the N terminal region of human TTC21B
Specificity:	<b>Expected reactivity:</b> Human
Formulation:	Liquid. Purified antibody supplied in 1x PBS buffer with 0.09% (w/v) sodium azide and 2% sucrose.
Concentration:	lot specific
Purification:	Affinity purified
Conjugation:	Unconjugated
Storage:	For short term use, store at 2-8°C up to 1 week. For long term storage, store at -20°C in small aliquots to prevent freeze-thaw cycles.
Stability:	Shelf life: one year from despatch.
Predicted Protein Size:	144 kDa
Gene Name:	tetratricopeptide repeat domain 21B
Database Link:	<a href="#">NP_079029.3</a> <a href="#">Entrez Gene 79809 Human</a> <a href="#">Q7Z4L5</a>
Background:	This gene encodes a member of TTC21 family, containing several tetratricopeptide repeat (TPR) domains. This protein is localized to the cilium axoneme, and may play a role in retrograde intraflagellar transport in cilia. Mutations in this gene are associated with various ciliopathies, nephronophthisis 12, and asphyxiating thoracic dystrophy 4.
Synonyms:	FLJ11457; KIAA1992; Nbla10696; THM1
Protein Families:	Protease



[View online »](#)

## Product images:



Host: Rabbit  
Target Name: TTC21B  
Sample Type: HCT116 Cell Lysate  
Antibody Dilution: 1.0 $\mu$ g/ml

Host: Rabbit  
Target Name: TTC21B  
Sample Tissue: Human HCT116 Whole Cell lysates  
Antibody Dilution: 3 $\mu$ g/ml