

## Product datasheet for **TA359958**

### **SIN1 (MAPKAP1) Rabbit Polyclonal Antibody**

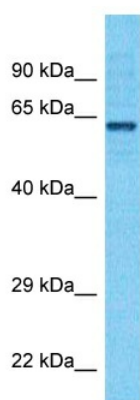
#### **Product data:**

Product Type:	Primary Antibodies
Applications:	WB
Reactivity:	Human
Host:	Rabbit
Clonality:	Polyclonal
Immunogen:	The immunogen is a synthetic peptide directed towards the N-terminal region of Human SIN1
Specificity:	<b>Expected reactivity:</b> Human
Formulation:	Liquid. Purified antibody supplied in 1x PBS buffer with 0.09% (w/v) sodium azide and 2% sucrose. <i>Note that this product is shipped as lyophilized powder to China customers.</i>
Concentration:	lot specific
Purification:	Affinity purified
Conjugation:	Unconjugated
Storage:	For short term use, store at 2-8°C up to 1 week. For long term storage, store at -20°C in small aliquots to prevent freeze-thaw cycles.
Stability:	Shelf life: one year from despatch.
Predicted Protein Size:	57kDa
Gene Name:	mitogen-activated protein kinase associated protein 1
Database Link:	<a href="#">Entrez Gene 79109 Human</a> <a href="#">Q9BPZ7</a>
Background:	This gene encodes a protein that is highly similar to the yeast SIN1 protein, a stress-activated protein kinase. Alternatively spliced transcript variants encoding distinct isoforms have been described. Alternate polyadenylation sites as well as alternate 3' UTRs have been identified for transcripts of this gene.
Synonyms:	JC310; MGC2745; MIP1; mSIN1; OTTHUMP00000022141; SIN1; SIN1b; SIN1g



[View online »](#)

## Product images:



Host: Rabbit  
Target Name: SIN1  
Sample Tissue: HCT116 Cell Lysate  
Antibody Dilution: 1.0 $\mu$ g/ml

Host: Rabbit  
Target Name: SIN1  
Sample Type: HCT116 Whole Cell lysates  
Antibody Dilution: 1.0ug/ml