

Product datasheet for **TA359955**

C1orf149 (MEAF6) Rabbit Polyclonal Antibody

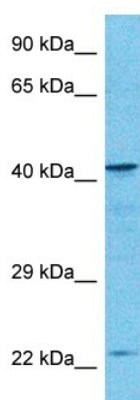
Product data:

Product Type:	Primary Antibodies
Applications:	WB
Reactivity:	Human
Host:	Rabbit
Clonality:	Polyclonal
Immunogen:	The immunogen is a synthetic peptide directed towards the N-terminal region of Human EAF6
Specificity:	Expected reactivity: Human
Formulation:	Liquid. Purified antibody supplied in 1x PBS buffer with 0.09% (w/v) sodium azide and 2% sucrose.
Concentration:	lot specific
Purification:	Affinity purified
Conjugation:	Unconjugated
Storage:	For short term use, store at 2-8°C up to 1 week. For long term storage, store at -20°C in small aliquots to prevent freeze-thaw cycles.
Stability:	Shelf life: one year from despatch.
Predicted Protein Size:	21kDa
Gene Name:	MYST/Esa1 associated factor 6
Database Link:	Entrez Gene 64769 Human Q9HAF1
Background:	This gene encodes a nuclear protein involved in transcriptional activation. The encoded protein may form a component of several different histone acetyltransferase complexes. There is a pseudogene for this gene on chromosome 2. Alternative splicing results in multiple transcript variants.
Synonyms:	2310005N01Rik; 2810036M01Rik



[View online »](#)

Product images:



Host: Rabbit
Target Name: EAF6
Sample Tissue: U937 Cell Lysate
Antibody Dilution: 1.0µg/ml

Host: Rabbit
Target Name: EAF6
Sample Type: U937 Whole Cell lysates
Antibody Dilution: 1.0ug/ml