

## Product datasheet for **TA359951**

### SPATS2 Rabbit Polyclonal Antibody

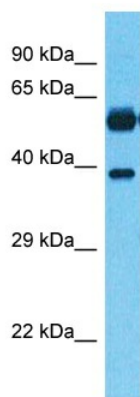
#### Product data:

Product Type:	Primary Antibodies
Applications:	WB
Reactivity:	Human
Host:	Rabbit
Clonality:	Polyclonal
Immunogen:	The immunogen is a synthetic peptide directed towards the C-terminal region of Human SPAS2
Specificity:	<b>Expected reactivity:</b> Human
Formulation:	Liquid. Purified antibody supplied in 1x PBS buffer with 0.09% (w/v) sodium azide and 2% sucrose. <i>Note that this product is shipped as lyophilized powder to China customers.</i>
Concentration:	lot specific
Purification:	Affinity purified
Conjugation:	Unconjugated
Storage:	For short term use, store at 2-8°C up to 1 week. For long term storage, store at -20°C in small aliquots to prevent freeze-thaw cycles.
Stability:	Shelf life: one year from despatch.
Predicted Protein Size:	59kDa
Gene Name:	spermatogenesis associated serine rich 2
Database Link:	<a href="#">NP_075559</a> <a href="#">Entrez Gene 65244 Human</a> <a href="#">Q86XZ4</a>
Synonyms:	FLJ13117; Nbla00526; P59SCR; SCR59; SPATA10



[View online »](#)

## Product images:



Host: Rabbit  
Target Name: SPAS2  
Sample Tissue: Fetal Lung Lysate  
Antibody Dilution: 1.0 $\mu$ g/ml

Host: Rabbit  
Target Name: SPAS2  
Sample Type: Fetal Lung lysates  
Antibody Dilution: 1.0ug/ml