

Product datasheet for **TA359945**

MAK10 (NAA35) Rabbit Polyclonal Antibody

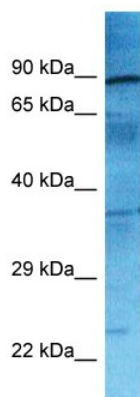
Product data:

Product Type:	Primary Antibodies
Applications:	WB
Reactivity:	Human
Host:	Rabbit
Clonality:	Polyclonal
Immunogen:	The immunogen is a synthetic peptide directed towards the N-terminal region of Human NAA35
Specificity:	Expected reactivity: Human
Formulation:	Liquid. Purified antibody supplied in 1x PBS buffer with 0.09% (w/v) sodium azide and 2% sucrose. <i>Note that this product is shipped as lyophilized powder to China customers.</i>
Concentration:	lot specific
Purification:	Affinity purified
Conjugation:	Unconjugated
Storage:	For short term use, store at 2-8°C up to 1 week. For long term storage, store at -20°C in small aliquots to prevent freeze-thaw cycles.
Stability:	Shelf life: one year from despatch.
Predicted Protein Size:	79kDa
Gene Name:	N(alpha)-acetyltransferase 35, NatC auxiliary subunit
Database Link:	XP_005252184 Entrez Gene 60560 Human Q5VZE5
Background:	NAA35 is a auxillary component of the N-terminal acetyltransferase C (NatC) complex which catalyzes acetylation of N-terminal methionine residues. It is involved in regulation of apoptosis and proliferation of smooth muscle cells.
Synonyms:	bA379P1.1; MAK10; RP11-379P1.1



[View online »](#)

Product images:



Host: Rabbit
Target Name: NAA35
Sample Tissue: Ovary Tumor Lysate
Antibody Dilution: 1.0 μ g/ml

Host: Rabbit
Target Name: NAA35
Sample Type: Ovary Tumor lysates
Antibody Dilution: 1.0ug/ml