

Product datasheet for **TA359938**

NGLY1 Rabbit Polyclonal Antibody

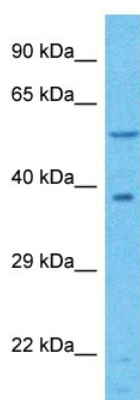
Product data:

Product Type:	Primary Antibodies
Applications:	WB
Reactivity:	Human
Host:	Rabbit
Clonality:	Polyclonal
Immunogen:	The immunogen is a synthetic peptide directed towards the middle region of Human NGLY1
Specificity:	Expected reactivity: Human
Formulation:	Liquid. Purified antibody supplied in 1x PBS buffer with 0.09% (w/v) sodium azide and 2% sucrose. <i>Note that this product is shipped as lyophilized powder to China customers.</i>
Concentration:	lot specific
Purification:	Affinity purified
Conjugation:	Unconjugated
Storage:	For short term use, store at 2-8°C up to 1 week. For long term storage, store at -20°C in small aliquots to prevent freeze-thaw cycles.
Stability:	Shelf life: one year from despatch.
Predicted Protein Size:	61kDa
Gene Name:	N-glycanase 1
Database Link:	Entrez Gene 55768 Human Q96IV0-3
Background:	This gene encodes an enzyme that catalyzes hydrolysis of an N(4)-(acetyl-beta-D-glucosaminy) asparagine residue to N-acetyl-beta-D-glucosaminyamine and a peptide containing an aspartate residue. The encoded enzyme may play a role in the proteasome-mediated degradation of misfolded glycoproteins. Multiple transcript variants encoding different isoforms have been found for this gene.
Synonyms:	FLJ11005; FLJ12409; hPNGase; peptide-N(4)-(N-acetyl-beta-glucosaminy)asparagin; Peptide:N-glycanase; PNG1; PNGase



[View online »](#)

Product images:



Host: Rabbit
Target Name: NGLY1
Sample Tissue: 786-0 Cell Lysate
Antibody Dilution: 1.0µg/ml

Host: Rabbit
Target Name: NGLY1
Sample Type: 786-0 Whole Cell lysates
Antibody Dilution: 1.0ug/ml