

Product datasheet for **TA359936**

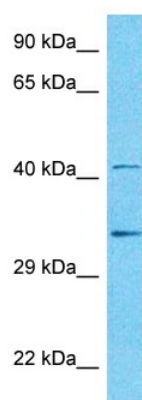
RUFY2 Rabbit Polyclonal Antibody

Product data:

Product Type:	Primary Antibodies
Applications:	WB
Reactivity:	Human
Host:	Rabbit
Clonality:	Polyclonal
Immunogen:	The immunogen is a synthetic peptide directed towards the middle region of Human RUFY2
Specificity:	Expected reactivity: Human
Formulation:	Liquid. Purified antibody supplied in 1x PBS buffer with 0.09% (w/v) sodium azide and 2% sucrose.
Concentration:	lot specific
Purification:	Affinity purified
Conjugation:	Unconjugated
Storage:	For short term use, store at 2-8°C up to 1 week. For long term storage, store at -20°C in small aliquots to prevent freeze-thaw cycles.
Stability:	Shelf life: one year from despatch.
Predicted Protein Size:	41kDa
Gene Name:	RUN and FYVE domain containing 2
Database Link:	Entrez Gene 55680 Human Q8WXA3-5
Background:	The function of this protein remains unknown.
Synonyms:	FLJ10063; KIAA1537; RABIP4R; ZFYVE13



[View online »](#)

Product images:


Host: Rabbit
 Target Name: RUFY2
 Sample Tissue: Fetal Kidney Lysate
 Antibody Dilution: 1.0µg/ml

Host: Rabbit
 Target Name: RUFY2
 Sample Type: Fetal Kidney lysates
 Antibody Dilution: 1.0ug/ml