

## Product datasheet for **TA359930**

### **RAP80 (UIMC1) Rabbit Polyclonal Antibody**

#### **Product data:**

Product Type:	Primary Antibodies
Applications:	WB
Reactivity:	Human
Host:	Rabbit
Clonality:	Polyclonal
Immunogen:	The immunogen is a synthetic peptide directed towards the middle region of Human UIMC1
Specificity:	<b>Expected reactivity:</b> Human
Formulation:	Liquid. Purified antibody supplied in 1x PBS buffer with 0.09% (w/v) sodium azide and 2% sucrose. <i>Note that this product is shipped as lyophilized powder to China customers.</i>
Concentration:	lot specific
Purification:	Affinity purified
Conjugation:	Unconjugated
Storage:	For short term use, store at 2-8°C up to 1 week. For long term storage, store at -20°C in small aliquots to prevent freeze-thaw cycles.
Stability:	Shelf life: one year from despatch.
Predicted Protein Size:	79kDa
Gene Name:	ubiquitin interaction motif containing 1
Database Link:	<a href="#">Entrez Gene 51720 Human Q96RL1</a>



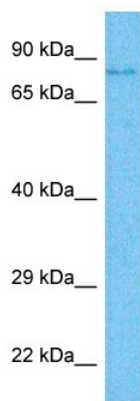
[View online »](#)

**Background:**

UIMC1 is a ubiquitin-binding protein that specifically recognizes and binds 'Lys-63'-linked ubiquitin. It plays a central role in the BRCA1-A complex by specifically binding 'Lys-63'-linked ubiquitinated histones H2A and H2AX at DNA lesions sites, leading to target the BRCA1-BARD1 heterodimer to sites of DNA damage at double-strand breaks (DSBs). The BRCA1-A complex also possesses deubiquitinase activity that specifically removes 'Lys-63'-linked ubiquitin on histones H2A and H2AX. It also weakly binds monoubiquitin but with much less affinity than 'Lys-63'-linked ubiquitin. It may interact with monoubiquitinated histones H2A and H2B; the relevance of such results is however unclear in vivo. Does not bind Lys-48'-linked ubiquitin. And it may indirectly act as a transcriptional repressor by inhibiting the interaction of NR6A1 with the corepressor NCOR1.

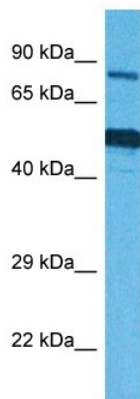
**Synonyms:**

RAP80; RXRIP110; X2HRIP110

**Product images:**


Host: Rabbit  
 Target Name: UIMC1  
 Sample Tissue: MCF7 Cell Lysate  
 Antibody Dilution: 1.0µg/ml

Host: Rabbit  
 Target Name: UIMC1  
 Sample Type: MCF7 Whole Cell lysates  
 Antibody Dilution: 1.0ug/ml



Host: Rabbit  
 Target Name: UIMC1  
 Sample Type: HCT116 Cell Lysate  
 Antibody Dilution: 1.0µg/ml

Host: Rabbit  
 Target Name: UIMC1  
 Sample Tissue: Human HCT116 Whole Cell  
 Antibody Dilution: 1 ug/ml