

Product datasheet for **TA359923**

LUC7L2 Rabbit Polyclonal Antibody

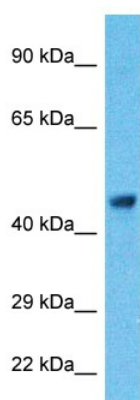
Product data:

Product Type:	Primary Antibodies
Applications:	WB
Reactivity:	Human
Host:	Rabbit
Clonality:	Polyclonal
Immunogen:	The immunogen is a synthetic peptide directed towards the C-terminal region of Human LC7L2
Specificity:	Expected reactivity: Human
Formulation:	Liquid. Purified antibody supplied in 1x PBS buffer with 0.09% (w/v) sodium azide and 2% sucrose.
Concentration:	lot specific
Purification:	Affinity purified
Conjugation:	Unconjugated
Storage:	For short term use, store at 2-8°C up to 1 week. For long term storage, store at -20°C in small aliquots to prevent freeze-thaw cycles.
Stability:	Shelf life: one year from despatch.
Predicted Protein Size:	43kDa
Gene Name:	LUC7-like 2 pre-mRNA splicing factor
Database Link:	NP_057103 Entrez Gene 51631 Human Q9Y383
Background:	This gene encodes a protein that contains a C2H2-type zinc finger, coiled-coil region and arginine, serine-rich (RS) domain. A similar protein in mouse interacts with sodium channel modifier 1, and the encoded protein may be involved in the recognition of non-consensus splice donor sites in association with the U1 snRNP spliceosomal subunit. Alternatively spliced transcript variants encoding multiple isoforms have been observed for this gene.
Synonyms:	CGI-59; CGI-74; FLJ10657; hLuc7B2; H_NH0792N18.3; LUC7B2



[View online »](#)

Product images:



Host: Rabbit
Target Name: LC7L2
Sample Tissue: Hela Cell Lysate
Antibody Dilution: 1.0µg/ml

Host: Rabbit
Target Name: LC7L2
Sample Type: Hela Whole Cell lysates
Antibody Dilution: 1.0ug/ml