

Product datasheet for **TA359921**

KLF13 Rabbit Polyclonal Antibody

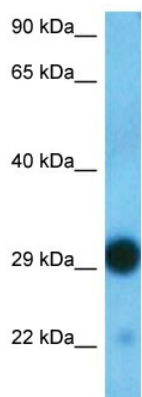
Product data:

Product Type:	Primary Antibodies
Applications:	WB
Reactivity:	Human
Host:	Rabbit
Clonality:	Polyclonal
Immunogen:	The immunogen is a synthetic peptide directed towards the Middle region of Human KLF13
Specificity:	Expected reactivity: Human
Formulation:	Liquid. Purified antibody supplied in 1x PBS buffer with 0.09% (w/v) sodium azide and 2% sucrose.
Concentration:	lot specific
Purification:	Affinity purified
Conjugation:	Unconjugated
Storage:	For short term use, store at 2-8°C up to 1 week. For long term storage, store at -20°C in small aliquots to prevent freeze-thaw cycles.
Stability:	Shelf life: one year from despatch.
Predicted Protein Size:	31 kDa
Gene Name:	Kruppel-like factor 13
Database Link:	NP_057079.2 Entrez Gene 51621 Human Q9Y2Y9
Background:	KLF13 belongs to a family of transcription factors that contain 3 classical zinc finger DNA-binding domains consisting of a zinc atom tetrahedrally coordinated by 2 cysteines and 2 histidines (C2H2 motif). These transcription factors bind to GC-rich sequences and related GT and CACCC boxes.
Synonyms:	BTEB3; FKLF-2; FKLF2; NSLP1; RFLAT-1; RFLAT1



[View online »](#)

Product images:



Host: Rabbit
Target Name: KLF13
Sample Tissue: 721_B Cell Lysate
Antibody Dilution: 2.0µg/ml

Host: Rabbit
Target Name: KLF13
Sample Type: 721_B Whole Cell
Antibody Dilution: 1.0ug/ml