

Product datasheet for **TA359916**

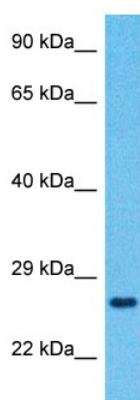
TICAM2 (TMED7-TICAM2) Rabbit Polyclonal Antibody

Product data:

Product Type:	Primary Antibodies
Applications:	WB
Reactivity:	Human
Host:	Rabbit
Clonality:	Polyclonal
Immunogen:	The immunogen is a synthetic peptide directed towards the C-terminal region of Human TMED7
Specificity:	Expected reactivity: Human
Formulation:	Liquid. Purified antibody supplied in 1x PBS buffer with 0.09% (w/v) sodium azide and 2% sucrose.
Concentration:	lot specific
Purification:	Affinity purified
Conjugation:	Unconjugated
Storage:	For short term use, store at 2-8°C up to 1 week. For long term storage, store at -20°C in small aliquots to prevent freeze-thaw cycles.
Stability:	Shelf life: one year from despatch.
Predicted Protein Size:	24kDa
Gene Name:	TMED7-TICAM2 readthrough
Database Link:	NP_861974 Entrez Gene 100302736 Human Q9Y3B3
Background:	This locus represents naturally occurring read-through transcription between the neighboring transmembrane emp24 protein transport domain containing 7 (TMED7) and toll-like receptor adaptor molecule 2 (TICAM2) genes. Alternative splicing results in multiple transcript variants, one of which encodes a fusion protein that shares sequence identity with the products of each individual gene. This fusion product functions to negatively regulate the adaptor MyD88-independent toll-like receptor 4 pathway.



[View online »](#)

Product images:


Host: Rabbit
 Target Name: TMED7
 Sample Tissue: Ovary Tumor Lysate
 Antibody Dilution: 1.0µg/ml

Host: Rabbit
 Target Name: TMED7
 Sample Type: Ovary Tumor lysates
 Antibody Dilution: 1.0ug/ml