

## Product datasheet for **TA359907**

### PIB5PA (INPP5J) Rabbit Polyclonal Antibody

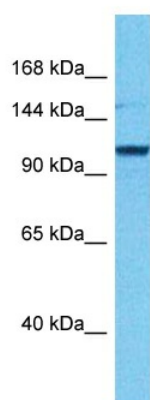
#### Product data:

Product Type:	Primary Antibodies
Applications:	WB
Reactivity:	Human
Host:	Rabbit
Clonality:	Polyclonal
Immunogen:	The immunogen is a synthetic peptide directed towards the C-terminal region of Human PI5PA
Specificity:	<b>Expected reactivity:</b> Human
Formulation:	Liquid. Purified antibody supplied in 1x PBS buffer with 0.09% (w/v) sodium azide and 2% sucrose.
Concentration:	lot specific
Purification:	Affinity purified
Conjugation:	Unconjugated
Storage:	For short term use, store at 2-8°C up to 1 week. For long term storage, store at -20°C in small aliquots to prevent freeze-thaw cycles.
Stability:	Shelf life: one year from despatch.
Predicted Protein Size:	110kDa
Gene Name:	inositol polyphosphate-5-phosphatase J
Database Link:	<a href="#">Entrez Gene 27124 Human Q15735</a>
Synonyms:	INPP5; MGC129984; PIB5PA; PIPP



[View online »](#)

## Product images:



Host: Rabbit  
Target Name: PI5PA  
Sample Tissue: COLO205 Cell Lysate  
Antibody Dilution: 1.0µg/ml

Host: Rabbit  
Target Name: PI5PA  
Sample Type: COLO205 Whole Cell lysates  
Antibody Dilution: 1.0ug/ml