

Product datasheet for **TA359904**

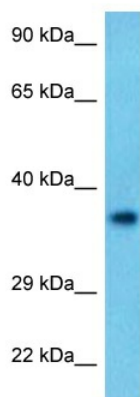
L3MBTL1 Rabbit Polyclonal Antibody

Product data:

Product Type:	Primary Antibodies
Applications:	WB
Reactivity:	Human
Host:	Rabbit
Clonality:	Polyclonal
Immunogen:	The immunogen for Anti-L3MBTL1 antibody is: synthetic peptide directed towards the N-terminal of Human LMBL1
Specificity:	Expected reactivity: Human
Formulation:	Liquid. Purified antibody supplied in 1x PBS buffer with 0.09% (w/v) sodium azide and 2% sucrose. <i>Note that this product is shipped as lyophilized powder to China customers.</i>
Concentration:	lot specific
Purification:	Affinity purified
Conjugation:	Unconjugated
Storage:	For short term use, store at 2-8°C up to 1 week. For long term storage, store at -20°C in small aliquots to prevent freeze-thaw cycles.
Stability:	Shelf life: one year from despatch.
Predicted Protein Size:	42 kDa
Gene Name:	I(3)mbt-like 1 (Drosophila)
Database Link:	Entrez Gene 26013 Human Q9Y468-3
Background:	This gene represents a polycomb group gene. The encoded protein functions to regulate gene activity, likely via chromatin modification. The encoded protein may also be necessary for mitosis. Alternatively spliced transcript variants encoding different isoforms have been identified.
Synonyms:	C630004G01; L3mbtl; mKIAA0681



[View online »](#)

Product images:

Host: Rabbit
Target Name: LMBL1
Sample Tissue: Jurkat Cell Lysate
Antibody Dilution: 2.0 μ g/ml

Host: Rabbit
Target Name: LMBL1
Sample Type: Jurkat Whole Cell
Antibody Dilution: 1.0 μ g/ml