

## Product datasheet for **TA359901**

### GCIP interacting protein p29 (SYF2) Rabbit Polyclonal Antibody

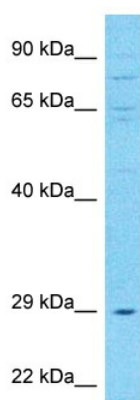
#### Product data:

Product Type:	Primary Antibodies
Applications:	WB
Reactivity:	Human
Host:	Rabbit
Clonality:	Polyclonal
Immunogen:	The immunogen is a synthetic peptide directed towards the C-terminal region of Human SYF2
Specificity:	<b>Expected reactivity:</b> Human
Formulation:	Liquid. Purified antibody supplied in 1x PBS buffer with 0.09% (w/v) sodium azide and 2% sucrose. <i>Note that this product is shipped as lyophilized powder to China customers.</i>
Concentration:	lot specific
Purification:	Affinity purified
Conjugation:	Unconjugated
Storage:	For short term use, store at 2-8°C up to 1 week. For long term storage, store at -20°C in small aliquots to prevent freeze-thaw cycles.
Stability:	Shelf life: one year from despatch.
Predicted Protein Size:	26kDa
Gene Name:	SYF2 pre-mRNA splicing factor
Database Link:	<a href="#">Entrez Gene 25949 Human O95926</a>
Background:	This gene encodes a nuclear protein that interacts with cyclin D-type binding-protein 1, which is thought to be a cell cycle regulator at the G1/S transition. Alternate transcriptional splice variants, encoding different isoforms, have been characterized.
Synonyms:	CBPIN; CCNDBP1-interactor; DKFZp564O2082; fSAP29; GCIP; NTC31; P29



[View online »](#)

## Product images:



Host: Rabbit  
Target Name: SYF2  
Sample Tissue: RPMI-8226 Cell Lysate  
Antibody Dilution: 1.0 $\mu$ g/ml

Host: Rabbit  
Target Name: SYF2  
Sample Type: RPMI-8226 Whole Cell lysates  
Antibody Dilution: 1.0ug/ml