

Product datasheet for **TA359892**

KIF4A Rabbit Polyclonal Antibody

Product data:

Product Type:	Primary Antibodies
Applications:	WB
Reactivity:	Human
Host:	Rabbit
Clonality:	Polyclonal
Immunogen:	The immunogen is a synthetic peptide directed towards the middle terminal region of human KIF4A
Specificity:	Expected reactivity: Human
Formulation:	Liquid. Purified antibody supplied in 1x PBS buffer with 0.09% (w/v) sodium azide and 2% sucrose. <i>Note that this product is shipped as lyophilized powder to China customers.</i>
Concentration:	lot specific
Purification:	Affinity purified
Conjugation:	Unconjugated
Storage:	For short term use, store at 2-8°C up to 1 week. For long term storage, store at -20°C in small aliquots to prevent freeze-thaw cycles.
Stability:	Shelf life: one year from despatch.
Predicted Protein Size:	140 kDa
Gene Name:	kinesin family member 4A
Database Link:	NP_036442.3 Entrez Gene 24137 Human O95239

Background: This gene encodes a member of the kinesin 4 subfamily of kinesin related proteins. The encoded protein is an ATP dependent microtubule-based motor protein that is involved in the intracellular transport of membranous organelles. This protein also associates with condensed chromosome arms and may be involved in maintaining chromosome integrity during mitosis. This protein may also be involved in the organization of the central spindle prior to cytokinesis. A pseudogene of this gene is found on chromosome X.

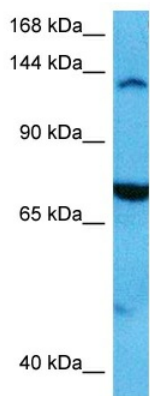


[View online »](#)

Synonyms: chromokinesin; Chromokinesin-A; FLJ12530; FLJ12655; FLJ14204; FLJ20631; HSA271784; KIF4; KIF4-G1

Protein Families: Druggable Genome

Product images:



Host: Rabbit
 Target Name: KIF4A
 Sample Type: PANC1 Cell Lysate
 Antibody Dilution: 1.0µg/ml

Host: Rabbit
 Target Name: KIF4A
 Sample Tissue: Human PANC1 Whole Cell lysates
 Antibody Dilution: 1ug/ml