

Product datasheet for **TA359884**

Syntaxin 12 (STX12) Rabbit Polyclonal Antibody

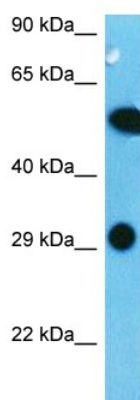
Product data:

Product Type:	Primary Antibodies
Applications:	WB
Reactivity:	Human
Host:	Rabbit
Clonality:	Polyclonal
Immunogen:	The immunogen is a synthetic peptide directed towards the N-terminal region of Human STX12
Specificity:	Expected reactivity: Human
Formulation:	Liquid. Purified antibody supplied in 1x PBS buffer with 0.09% (w/v) sodium azide and 2% sucrose. <i>Note that this product is shipped as lyophilized powder to China customers.</i>
Concentration:	lot specific
Purification:	Affinity purified
Conjugation:	Unconjugated
Storage:	For short term use, store at 2-8°C up to 1 week. For long term storage, store at -20°C in small aliquots to prevent freeze-thaw cycles.
Stability:	Shelf life: one year from despatch.
Predicted Protein Size:	30 kDa
Gene Name:	syntaxin 12
Database Link:	NP_803173.1 Entrez Gene 23673 Human Q86Y82
Background:	SNARE that acts to regulate protein transport between late endosomes and the trans-Golgi network. The SNARE complex containing STX6, STX12, VAMP4 and VT11A mediates vesicle fusion.
Synonyms:	MGC51957; STX13; STX14



[View online »](#)

Product images:



Host: Rabbit
Target Name: STX12
Sample Tissue: 721_B Cell Lysate
Antibody Dilution: 1.0 μ g/ml

Host: Rabbit
Target Name: STX12
Sample Type: 721_B Whole Cell
Antibody Dilution: 1.0ug/ml