

## Product datasheet for **TA359883**

### PLEKHM2 Rabbit Polyclonal Antibody

#### Product data:

Product Type:	Primary Antibodies
Applications:	WB
Reactivity:	Human
Host:	Rabbit
Clonality:	Polyclonal
Immunogen:	The immunogen is a synthetic peptide directed towards the N-terminal region of Human PKHM2
Specificity:	<b>Expected reactivity:</b> Human
Formulation:	Liquid. Purified antibody supplied in 1x PBS buffer with 0.09% (w/v) sodium azide and 2% sucrose. <i>Note that this product is shipped as lyophilized powder to China customers.</i>
Concentration:	lot specific
Purification:	Affinity purified
Conjugation:	Unconjugated
Storage:	For short term use, store at 2-8°C up to 1 week. For long term storage, store at -20°C in small aliquots to prevent freeze-thaw cycles.
Stability:	Shelf life: one year from despatch.
Predicted Protein Size:	112kDa
Gene Name:	pleckstrin homology and RUN domain containing M2
Database Link:	<a href="#">NP_055979</a> <a href="#">Entrez Gene 23207 Human</a> <a href="#">Q8IWE5</a>



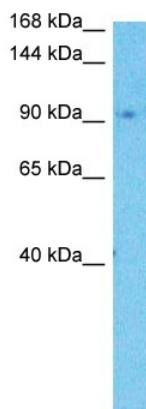
[View online »](#)

**Background:**

This gene encodes a protein that binds the plus-end directed microtubule motor protein kinesin, together with the lysosomal GTPase Arl8, and is required for lysosomes to distribute away from the microtubule-organizing center. The encoded protein belongs to the multisubunit BLOC-one-related complex that regulates lysosome positioning. It binds a Salmonella effector protein called Salmonella induced filament A and is a critical host determinant in Salmonella pathogenesis. It has a domain architecture consisting of an N-terminal RPIP8, UNC-14, and NESCA (RUN) domain that binds kinesin-1 as well as the lysosomal GTPase Arl8, and a C-terminal pleckstrin homology domain that binds the Salmonella induced filament A effector protein. Naturally occurring mutations in this gene lead to abnormal localization of lysosomes, impaired autophagy flux and are associated with recessive dilated cardiomyopathy and left ventricular noncompaction.

**Synonyms:**

KIAA0842; RP11-169K16.1; SKIP

**Product images:**


Host: Rabbit  
 Target Name: PKHM2  
 Sample Tissue: 721\_B Cell Lysate  
 Antibody Dilution: 1.0µg/ml

Host: Rabbit  
 Target Name: PKHM2  
 Sample Type: 721\_B Whole Cell lysates  
 Antibody Dilution: 1.0ug/ml