

## Product datasheet for **TA359882**

### EST1A (SMG6) Rabbit Polyclonal Antibody

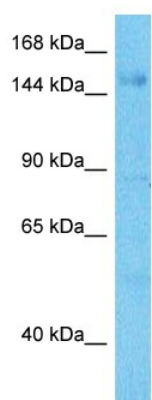
#### Product data:

Product Type:	Primary Antibodies
Applications:	WB
Reactivity:	Human
Host:	Rabbit
Clonality:	Polyclonal
Immunogen:	The immunogen is a synthetic peptide directed towards the middle region of Human EST1A
Specificity:	<b>Expected reactivity:</b> Human
Formulation:	Liquid. Purified antibody supplied in 1x PBS buffer with 0.09% (w/v) sodium azide and 2% sucrose. <i>Note that this product is shipped as lyophilized powder to China customers.</i>
Concentration:	lot specific
Purification:	Affinity purified
Conjugation:	Unconjugated
Storage:	For short term use, store at 2-8°C up to 1 week. For long term storage, store at -20°C in small aliquots to prevent freeze-thaw cycles.
Stability:	Shelf life: one year from despatch.
Predicted Protein Size:	156kDa
Gene Name:	SMG6, nonsense mediated mRNA decay factor
Database Link:	<a href="#">Entrez Gene 23293 Human Q86US8</a>
Background:	This gene encodes a component of the telomerase ribonucleoprotein complex responsible for the replication and maintenance of chromosome ends. The encoded protein also plays a role in the nonsense-mediated mRNA decay (NMD) pathway, providing the endonuclease activity near the premature translation termination codon that is needed to initiate NMD. Alternatively spliced transcript variants encoding distinct protein isoforms have been described.
Synonyms:	C17orf31; EST1A; Est1p-like; hSmg5/7a; KIAA0732; SMG-6



[View online »](#)

## Product images:



Host: Rabbit  
Target Name: EST1A  
Sample Tissue: Fetal Liver Lysate  
Antibody Dilution: 1.0 $\mu$ g/ml

Host: Rabbit  
Target Name: EST1A  
Sample Type: Fetal Liver lysates  
Antibody Dilution: 1.0 $\mu$ g/ml