

Product datasheet for **TA359877**

WAPL Rabbit Polyclonal Antibody

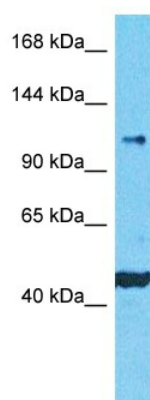
Product data:

| | |
|-------------------------|--|
| Product Type: | Primary Antibodies |
| Applications: | WB |
| Reactivity: | Human |
| Host: | Rabbit |
| Clonality: | Polyclonal |
| Immunogen: | The immunogen is a synthetic peptide directed towards the middle region of Human WAPL |
| Specificity: | Expected reactivity: Human |
| Formulation: | Liquid. Purified antibody supplied in 1x PBS buffer with 0.09% (w/v) sodium azide and 2% sucrose. |
| Concentration: | lot specific |
| Purification: | Affinity purified |
| Conjugation: | Unconjugated |
| Storage: | For short term use, store at 2-8°C up to 1 week. For long term storage, store at -20°C in small aliquots to prevent freeze-thaw cycles. |
| Stability: | Shelf life: one year from despatch. |
| Predicted Protein Size: | 130kDa |
| Gene Name: | WAPL cohesin release factor |
| Database Link: | NP_055860 Entrez Gene 23063 Human Q7Z5K2 |
| Background: | WAPL is a regulator of sister chromatid cohesion in mitosis which negatively regulates cohesin association with chromatin. It is involved in both sister chromatid cohesion during interphase and sister- chromatid resolution during early stages of mitosis. It couples DNA replication to sister chromatid cohesion. Cohesion ensures that chromosome partitioning is accurate in both meiotic and mitotic cells and plays an important role in DNA repair. |



[View online »](#)

Product images:



Host: Rabbit
Target Name: WAPL
Sample Tissue: HCT116 Cell Lysate
Antibody Dilution: 1.0 μ g/ml

Host: Rabbit
Target Name: WAPL
Sample Type: HCT116 Whole Cell lysates
Antibody Dilution: 1.0ug/ml