

## Product datasheet for **TA359876**

### TTLL5 Rabbit Polyclonal Antibody

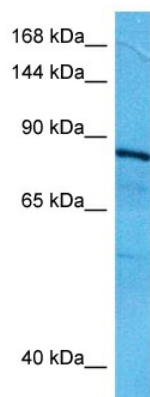
#### Product data:

Product Type:	Primary Antibodies
Applications:	WB
Reactivity:	Human
Host:	Rabbit
Clonality:	Polyclonal
Immunogen:	The immunogen is a synthetic peptide directed towards the middle region of human TTLL5
Specificity:	<b>Expected reactivity:</b> Human
Formulation:	Liquid. Purified antibody supplied in 1x PBS buffer with 0.09% (w/v) sodium azide and 2% sucrose.
Concentration:	lot specific
Purification:	Affinity purified
Conjugation:	Unconjugated
Storage:	For short term use, store at 2-8°C up to 1 week. For long term storage, store at -20°C in small aliquots to prevent freeze-thaw cycles.
Stability:	Shelf life: one year from despatch.
Predicted Protein Size:	92 kDa
Gene Name:	tubulin tyrosine ligase like 5
Database Link:	<a href="#">NP_055887.3</a> <a href="#">Entrez Gene 23093 Human</a> <a href="#">Q6EMB2-2</a>
Background:	This gene encodes a member of the tubulin tyrosine ligase like protein family. This protein interacts with two glucocorticoid receptor coactivators, transcriptional intermediary factor 2 and steroid receptor coactivator 1. This protein may function as a coregulator of glucocorticoid receptor mediated gene induction and repression. This protein may also function as an alpha tubulin polyglutamylase.
Synonyms:	KIAA0998; MGC117189; STAMP



[View online »](#)

## Product images:



Host: Rabbit  
 Target Name: TTLL5  
 Sample Type: RPMI-8226 Cell Lysate  
 Antibody Dilution: 1.0µg/ml

Host: Rabbit  
 Target Name: TTLL5  
 Sample Tissue: Human RPMI 8226 Whole Cell  
 lysates  
 Antibody Dilution: 1ug/ml