

Product datasheet for **TA359868**

TREX1 Rabbit Polyclonal Antibody

Product data:

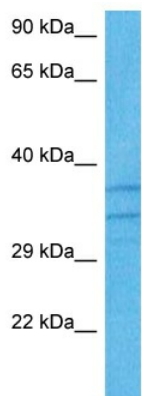
Product Type:	Primary Antibodies
Applications:	WB
Reactivity:	Human
Host:	Rabbit
Clonality:	Polyclonal
Immunogen:	The immunogen is a synthetic peptide directed towards the middle region of human TREX1
Specificity:	Expected reactivity: Human
Formulation:	Liquid. Purified antibody supplied in 1x PBS buffer with 0.09% (w/v) sodium azide and 2% sucrose. <i>Note that this product is shipped as lyophilized powder to China customers.</i>
Concentration:	lot specific
Purification:	Affinity purified
Conjugation:	Unconjugated
Storage:	For short term use, store at 2-8°C up to 1 week. For long term storage, store at -20°C in small aliquots to prevent freeze-thaw cycles.
Stability:	Shelf life: one year from despatch.
Predicted Protein Size:	41 kDa
Gene Name:	three prime repair exonuclease 1
Database Link:	NP_009179.2 Entrez Gene 11277 Human Q9NSU2
Background:	This gene encodes a nuclear protein with 3' exonuclease activity. The encoded protein may play a role in DNA repair and serve as a proofreading function for DNA polymerase. Mutations in this gene result in Aicardi-Goutieres syndrome, chilblain lupus, Cree encephalitis, and other diseases of the immune system. Alternative splicing results in multiple transcript variants.
Synonyms:	AGS1; CRV; DKFZp434J0310; DRN3; HERN3; OTTHUMP00000164813; OTTHUMP00000210132
Protein Families:	Druggable Genome, Transmembrane



[View online »](#)

Protein Pathways: Cytosolic DNA-sensing pathway

Product images:



Host: Rabbit
Target Name: TREX1
Sample Type: Jurkat Cell Lysate
Antibody Dilution: 1.0 μ g/ml

Host: Rabbit
Target Name: TREX1
Sample Tissue: Human Jurkat Whole Cell lysates
Antibody Dilution: 1 μ g/ml