

## Product datasheet for **TA359854**

### **RPP20 (POP7) Rabbit Polyclonal Antibody**

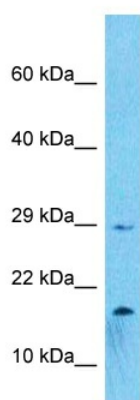
#### **Product data:**

Product Type:	Primary Antibodies
Applications:	WB
Reactivity:	Human
Host:	Rabbit
Clonality:	Polyclonal
Immunogen:	The immunogen is a synthetic peptide directed towards the N-terminal region of Human POP7
Specificity:	<b>Expected reactivity:</b> Human
Formulation:	Liquid. Purified antibody supplied in 1x PBS buffer with 0.09% (w/v) sodium azide and 2% sucrose. <i>Note that this product is shipped as lyophilized powder to China customers.</i>
Concentration:	lot specific
Purification:	Affinity purified
Conjugation:	Unconjugated
Storage:	For short term use, store at 2-8°C up to 1 week. For long term storage, store at -20°C in small aliquots to prevent freeze-thaw cycles.
Stability:	Shelf life: one year from despatch.
Predicted Protein Size:	15kDa
Gene Name:	POP7 homolog, ribonuclease P/MRP subunit
Database Link:	<a href="#">NP_005828</a> <a href="#">Entrez Gene 10248 Human</a> <a href="#">O75817</a>
Background:	POP7 is a component of ribonuclease P, a protein complex that generates mature tRNA molecules by cleaving their 5'-ends. Also a component of RNase MRP complex, which cleaves pre-rRNA sequences.
Synonyms:	0610037N12Rik; hPOP7; RPP2; RPP20



[View online »](#)

## Product images:



Host: Rabbit  
Target Name: POP7  
Sample Tissue: HeLa Cell Lysate  
Antibody Dilution: 1.0 $\mu$ g/ml

Host: Rabbit  
Target Name: POP7  
Sample Type: HeLa Whole Cell lysates  
Antibody Dilution: 1.0 $\mu$ g/ml