

## Product datasheet for **TA359851**

### **ALIX (PDCD6IP) Rabbit Polyclonal Antibody**

#### **Product data:**

Product Type:	Primary Antibodies
Applications:	WB
Reactivity:	Human
Host:	Rabbit
Clonality:	Polyclonal
Immunogen:	The immunogen is a synthetic peptide directed towards the C-terminal region of Human PDC6I
Specificity:	<b>Expected reactivity:</b> Human
Formulation:	Liquid. Purified antibody supplied in 1x PBS buffer with 0.09% (w/v) sodium azide and 2% sucrose. <i>Note that this product is shipped as lyophilized powder to China customers.</i>
Concentration:	lot specific
Purification:	Affinity purified
Conjugation:	Unconjugated
Storage:	For short term use, store at 2-8°C up to 1 week. For long term storage, store at -20°C in small aliquots to prevent freeze-thaw cycles.
Stability:	Shelf life: one year from despatch.
Predicted Protein Size:	95kDa
Gene Name:	programmed cell death 6 interacting protein
Database Link:	<a href="#">NP_037506</a> <a href="#">Entrez Gene 10015 Human</a> <a href="#">Q8WUM4</a>



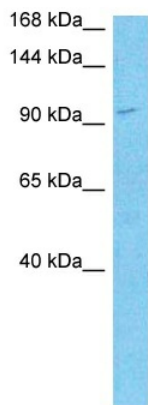
[View online »](#)

**Background:**

This gene encodes a protein that functions within the ESCRT pathway in the abscission stage of cytokinesis, in intraluminal endosomal vesicle formation, and in enveloped virus budding. Studies using mouse cells have shown that overexpression of this protein can block apoptosis. In addition, the product of this gene binds to the product of the PDCD6 gene, a protein required for apoptosis, in a calcium-dependent manner. This gene product also binds to endophilins, proteins that regulate membrane shape during endocytosis. Overexpression of this gene product and endophilins results in cytoplasmic vacuolization, which may be partly responsible for the protection against cell death. Several alternatively spliced transcript variants encoding different isoforms have been found for this gene. Related pseudogenes have been identified on chromosome 15.

**Synonyms:**

AIP1; Alix; DRIP4; Hp95; KIAA1375; MGC17003

**Product images:**


Host: Rabbit  
Target Name: PDC6I  
Sample Tissue: Fetal Lung Lysate  
Antibody Dilution: 1.0µg/ml

Host: Rabbit  
Target Name: PDC6I  
Sample Type: Fetal Lung lysates  
Antibody Dilution: 1.0ug/ml