

Product datasheet for **TA359850**

Chromosome X open reading frame 6 (MAMLD1) Rabbit Polyclonal Antibody

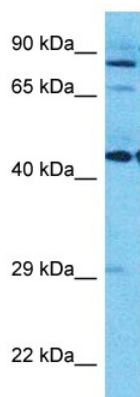
Product data:

Product Type:	Primary Antibodies
Applications:	WB
Reactivity:	Human
Host:	Rabbit
Clonality:	Polyclonal
Immunogen:	The immunogen is a synthetic peptide directed towards the C-terminal region of Human MAMD1
Specificity:	Expected reactivity: Human
Formulation:	Liquid. Purified antibody supplied in 1x PBS buffer with 0.09% (w/v) sodium azide and 2% sucrose.
Concentration:	lot specific
Purification:	Affinity purified
Conjugation:	Unconjugated
Storage:	For short term use, store at 2-8°C up to 1 week. For long term storage, store at -20°C in small aliquots to prevent freeze-thaw cycles.
Stability:	Shelf life: one year from despatch.
Predicted Protein Size:	85kDa
Gene Name:	mastermind like domain containing 1
Database Link:	Entrez Gene 10046 Human Q13495
Background:	This gene encodes a mastermind-like domain containing protein. This protein may function as a transcriptional co-activator. Mutations in this gene are the cause of X-linked hypospadias type 2. Alternate splicing results in multiple transcript variants.
Synonyms:	CG1; CXorf6; F18; HYSP2; OTTHUMP00000025851



[View online »](#)

Product images:



Host: Rabbit
Target Name: MAMD1
Sample Tissue: Stomach Tumor Lysate
Antibody Dilution: 1.0µg/ml

Host: Rabbit
Target Name: MAMD1
Sample Type: Stomach Tumor lysates
Antibody Dilution: 1.0ug/ml