

Product datasheet for **TA359848**

Vinexin (SORBS3) Rabbit Polyclonal Antibody

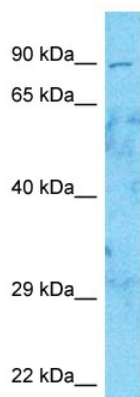
Product data:

Product Type:	Primary Antibodies
Applications:	WB
Reactivity:	Human
Host:	Rabbit
Clonality:	Polyclonal
Immunogen:	The immunogen is a synthetic peptide directed towards the N-terminal region of Human VINEX
Specificity:	Expected reactivity: Human
Formulation:	Liquid. Purified antibody supplied in 1x PBS buffer with 0.09% (w/v) sodium azide and 2% sucrose.
Concentration:	lot specific
Purification:	Affinity purified
Conjugation:	Unconjugated
Storage:	For short term use, store at 2-8°C up to 1 week. For long term storage, store at -20°C in small aliquots to prevent freeze-thaw cycles.
Stability:	Shelf life: one year from despatch.
Predicted Protein Size:	73kDa
Gene Name:	sorbin and SH3 domain containing 3
Database Link:	Entrez Gene 10174 Human O60504
Background:	This gene encodes an SH3 domain-containing adaptor protein. The presence of SH3 domains play a role in this protein's ability to bind other cytoplasmic molecules and contribute to cytoskeletal organization, cell adhesion and migration, signaling, and gene expression. Multiple transcript variants encoding different isoforms have been found for this gene.
Synonyms:	SCAM-1; SCAM1; SH3D4; VINEXIN



[View online »](#)

Product images:



Host: Rabbit
Target Name: VINEX
Sample Tissue: Fetal Lung Lysate
Antibody Dilution: 1.0 μ g/ml

Host: Rabbit
Target Name: VINEX
Sample Type: Fetal Lung lysates
Antibody Dilution: 1.0ug/ml