

Product datasheet for **TA359846**

ALIX (PDCD6IP) Rabbit Polyclonal Antibody

Product data:

Product Type:	Primary Antibodies
Applications:	WB
Reactivity:	Human
Host:	Rabbit
Clonality:	Polyclonal
Immunogen:	The immunogen is a synthetic peptide directed towards the C-terminal region of Human PDC6I
Specificity:	Expected reactivity: Human
Formulation:	Liquid. Purified antibody supplied in 1x PBS buffer with 0.09% (w/v) sodium azide and 2% sucrose. <i>Note that this product is shipped as lyophilized powder to China customers.</i>
Concentration:	lot specific
Purification:	Affinity purified
Conjugation:	Unconjugated
Storage:	For short term use, store at 2-8°C up to 1 week. For long term storage, store at -20°C in small aliquots to prevent freeze-thaw cycles.
Stability:	Shelf life: one year from despatch.
Predicted Protein Size:	95kDa
Gene Name:	programmed cell death 6 interacting protein
Database Link:	NP_037506 Entrez Gene 10015 Human Q8WUM4



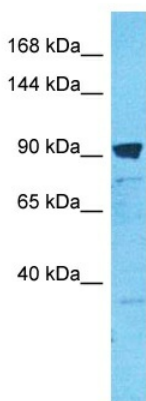
[View online »](#)

Background:

This gene encodes a protein that functions within the ESCRT pathway in the abscission stage of cytokinesis, in intraluminal endosomal vesicle formation, and in enveloped virus budding. Studies using mouse cells have shown that overexpression of this protein can block apoptosis. In addition, the product of this gene binds to the product of the PDCD6 gene, a protein required for apoptosis, in a calcium-dependent manner. This gene product also binds to endophilins, proteins that regulate membrane shape during endocytosis. Overexpression of this gene product and endophilins results in cytoplasmic vacuolization, which may be partly responsible for the protection against cell death. Several alternatively spliced transcript variants encoding different isoforms have been found for this gene. Related pseudogenes have been identified on chromosome 15.

Synonyms:

AIP1; Alix; DRIP4; Hp95; KIAA1375; MGC17003

Product images:

Host: Rabbit
Target Name: PDC6I
Sample Tissue: HCT116 Cell Lysate
Antibody Dilution: 1.0µg/ml

Host: Rabbit
Target Name: PDC6I
Sample Type: HCT116 Whole Cell lysates
Antibody Dilution: 1.0ug/ml