

## Product datasheet for **TA359845**

### STAF65 gamma (SUPT7L) Rabbit Polyclonal Antibody

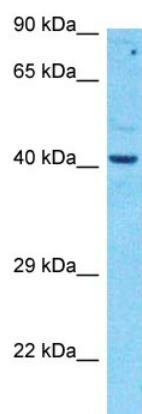
#### Product data:

Product Type:	Primary Antibodies
Applications:	WB
Reactivity:	Human
Host:	Rabbit
Clonality:	Polyclonal
Immunogen:	The immunogen is a synthetic peptide directed towards the C-terminal region of Human ST65G
Specificity:	<b>Expected reactivity:</b> Human
Formulation:	Liquid. Purified antibody supplied in 1x PBS buffer with 0.09% (w/v) sodium azide and 2% sucrose.
Concentration:	lot specific
Purification:	Affinity purified
Conjugation:	Unconjugated
Storage:	For short term use, store at 2-8°C up to 1 week. For long term storage, store at -20°C in small aliquots to prevent freeze-thaw cycles.
Stability:	Shelf life: one year from despatch.
Predicted Protein Size:	45kDa
Gene Name:	SPT7-like STAGA complex gamma subunit
Database Link:	<a href="#">Entrez Gene 9913 Human</a> <a href="#">O94864</a>
Background:	SUPT7L is a protein subunit of the human STAGA complex (SPT3; (MIM 602947)/TAF9 (MIM 600822)/GCN5 (MIM 602301) acetyltransferase complex), which is a chromatin-modifying multiprotein complex (Martinez et al., 2001 [PubMed 11564863]).[supplied by OMIM, Apr 2009]
Synonyms:	gamma; KIAA0764; MGC90306; OTTHUMP00000200854; SPT7L; STAF65; STAF65(gamma); STAF65G; STAF65gamma; SUPT7H



[View online »](#)

## Product images:



Host: Rabbit  
Target Name: ST65G  
Sample Tissue: Stomach Tumor Lysate  
Antibody Dilution: 1.0µg/ml

Host: Rabbit  
Target Name: ST65G  
Sample Type: Stomach Tumor lysates  
Antibody Dilution: 1.0ug/ml