

Product datasheet for **TA359840**

TTC35 (EMC2) Rabbit Polyclonal Antibody

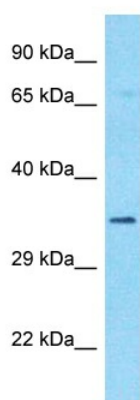
Product data:

Product Type:	Primary Antibodies
Applications:	WB
Reactivity:	Human
Host:	Rabbit
Clonality:	Polyclonal
Immunogen:	The immunogen is a synthetic peptide directed towards the N-terminal region of Human EMC2
Specificity:	Expected reactivity: Human
Formulation:	Liquid. Purified antibody supplied in 1x PBS buffer with 0.09% (w/v) sodium azide and 2% sucrose. <i>Note that this product is shipped as lyophilized powder to China customers.</i>
Concentration:	lot specific
Purification:	Affinity purified
Conjugation:	Unconjugated
Storage:	For short term use, store at 2-8°C up to 1 week. For long term storage, store at -20°C in small aliquots to prevent freeze-thaw cycles.
Stability:	Shelf life: one year from despatch.
Predicted Protein Size:	32kDa
Gene Name:	ER membrane protein complex subunit 2
Database Link:	NP_055488 Entrez Gene 9694 Human Q15006
Background:	The function of this protein remains unknown.
Synonyms:	4921531G14Rik; AV060620; AW209495; RGD1310430; Ttc35



[View online »](#)

Product images:



Host: Rabbit
Target Name: EMC2
Sample Tissue: NCI-H226 Cell Lysate
Antibody Dilution: 1.0 μ g/ml

Host: Rabbit
Target Name: EMC2
Sample Type: NCI-H226 Whole Cell lysates
Antibody Dilution: 1.0ug/ml