

Product datasheet for **TA359837**

SAPS2 (PPP6R2) Rabbit Polyclonal Antibody

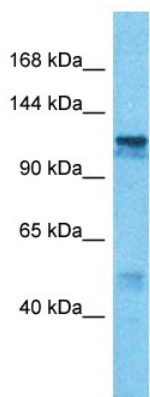
Product data:

Product Type:	Primary Antibodies
Applications:	WB
Reactivity:	Human
Host:	Rabbit
Clonality:	Polyclonal
Immunogen:	The immunogen is a synthetic peptide directed towards the C-terminal region of Human PP6R2
Specificity:	Expected reactivity: Human
Formulation:	Liquid. Purified antibody supplied in 1x PBS buffer with 0.09% (w/v) sodium azide and 2% sucrose.
Concentration:	lot specific
Purification:	Affinity purified
Conjugation:	Unconjugated
Storage:	For short term use, store at 2-8°C up to 1 week. For long term storage, store at -20°C in small aliquots to prevent freeze-thaw cycles.
Stability:	Shelf life: one year from despatch.
Predicted Protein Size:	106kDa
Gene Name:	protein phosphatase 6 regulatory subunit 2
Database Link:	XP_006724497 Entrez Gene 9701 Human O75170
Background:	The protein encoded by this gene is a regulatory protein for the protein phosphatase-6 catalytic subunit. Together, these proteins act as a significant T-loop phosphatase for Aurora A, an essential mitotic kinase. Loss of function of either the regulatory or catalytic subunit of protein phosphatase-6 interferes with spindle formation and chromosome alignment.
Synonyms:	KIAA0685; PP6R2; SAP190; SAPS2



[View online »](#)

Product images:



Host: Rabbit
Target Name: PP6R2
Sample Tissue: Jurkat Cell Lysate
Antibody Dilution: 1.0µg/ml

Host: Rabbit
Target Name: PP6R2
Sample Type: Jurkat Whole Cell lysates
Antibody Dilution: 1.0ug/ml