

Product datasheet for **TA359832**

RAI3 (GPCR5A) Rabbit Polyclonal Antibody

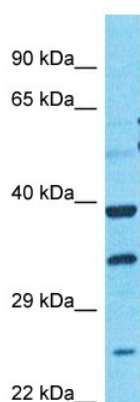
Product data:

Product Type:	Primary Antibodies
Applications:	WB
Reactivity:	Human
Host:	Rabbit
Clonality:	Polyclonal
Immunogen:	The immunogen is a synthetic peptide directed towards the C-terminal region of Human RAI3
Specificity:	Expected reactivity: Human
Formulation:	Liquid. Purified antibody supplied in 1x PBS buffer with 0.09% (w/v) sodium azide and 2% sucrose. <i>Note that this product is shipped as lyophilized powder to China customers.</i>
Concentration:	lot specific
Purification:	Affinity purified
Conjugation:	Unconjugated
Storage:	For short term use, store at 2-8°C up to 1 week. For long term storage, store at -20°C in small aliquots to prevent freeze-thaw cycles.
Stability:	Shelf life: one year from despatch.
Predicted Protein Size:	39kDa
Gene Name:	G protein-coupled receptor class C group 5 member A
Database Link:	NP_003970 Entrez Gene 9052 Human Q8NFJ5
Background:	This gene encodes a member of the type 3 G protein-coupling receptor family, characterized by the signature 7-transmembrane domain motif. The encoded protein may be involved in interaction between retinoid acid and G protein signalling pathways. Retinoic acid plays a critical role in development, cellular growth, and differentiation. This gene may play a role in embryonic development and epithelial cell differentiation.
Synonyms:	GPCR5A; RAI3; RAIG1



[View online »](#)

Product images:



Host: Rabbit
Target Name: RAI3
Sample Tissue: U937 Cell Lysate
Antibody Dilution: 1.0 μ g/ml

Host: Rabbit
Target Name: RAI3
Sample Type: U937 Whole Cell lysates
Antibody Dilution: 1.0 μ g/ml