

## Product datasheet for **TA359827**

### **KAT2B Rabbit Polyclonal Antibody**

#### **Product data:**

Product Type:	Primary Antibodies
Applications:	WB
Reactivity:	Human
Host:	Rabbit
Clonality:	Polyclonal
Immunogen:	The immunogen is a synthetic peptide directed towards the C terminal region of human KAT2B
Specificity:	<b>Expected reactivity:</b> Human
Formulation:	Liquid. Purified antibody supplied in 1x PBS buffer with 0.09% (w/v) sodium azide and 2% sucrose. <i>Note that this product is shipped as lyophilized powder to China customers.</i>
Concentration:	lot specific
Purification:	Affinity purified
Conjugation:	Unconjugated
Storage:	For short term use, store at 2-8°C up to 1 week. For long term storage, store at -20°C in small aliquots to prevent freeze-thaw cycles.
Stability:	Shelf life: one year from despatch.
Predicted Protein Size:	91 kDa
Gene Name:	lysine acetyltransferase 2B
Database Link:	<a href="#">NP_003875.3</a> <a href="#">Entrez Gene 8850 Human</a> <a href="#">Q92831</a>
Background:	CBP and p300 are large nuclear proteins that bind to many sequence-specific factors involved in cell growth and/or differentiation, including c-jun and the adenoviral oncoprotein E1A. The protein encoded by this gene associates with p300/CBP. It has in vitro and in vivo binding activity with CBP and p300, and competes with E1A for binding sites in p300/CBP. It has histone acetyl transferase activity with core histones and nucleosome core particles, indicating that this protein plays a direct role in transcriptional regulation.



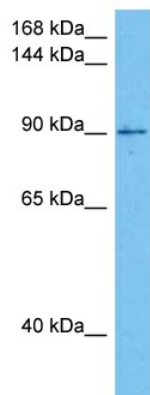
[View online >](#)

**Synonyms:** CAF; GCN5; GCN5L; P; P/CAF; PCAF

**Protein Families:** Druggable Genome, Transcription Factors

**Protein Pathways:** Notch signaling pathway

### Product images:



Host: Rabbit  
Target Name: KAT2B  
Sample Type: THP-1 Cell Lysate  
Antibody Dilution: 1.0 $\mu$ g/ml

Host: Rabbit  
Target Name: KAT2B  
Sample Tissue: Human THP-1 Whole Cell lysates  
Antibody Dilution: 1 $\mu$ g/ml