

Product datasheet for **TA359826**

KSR1 Rabbit Polyclonal Antibody

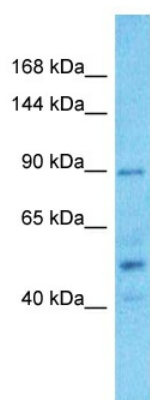
Product data:

| | |
|-------------------------|---|
| Product Type: | Primary Antibodies |
| Applications: | WB |
| Reactivity: | Human |
| Host: | Rabbit |
| Clonality: | Polyclonal |
| Immunogen: | The immunogen is a synthetic peptide directed towards the middle region of Human KSR1 |
| Specificity: | Expected reactivity: Human |
| Formulation: | Liquid. Purified antibody supplied in 1x PBS buffer with 0.09% (w/v) sodium azide and 2% sucrose. <i>Note that this product is shipped as lyophilized powder to China customers.</i> |
| Concentration: | lot specific |
| Purification: | Affinity purified |
| Conjugation: | Unconjugated |
| Storage: | For short term use, store at 2-8°C up to 1 week. For long term storage, store at -20°C in small aliquots to prevent freeze-thaw cycles. |
| Stability: | Shelf life: one year from despatch. |
| Predicted Protein Size: | 86kDa |
| Gene Name: | kinase suppressor of ras 1 |
| Database Link: | Entrez Gene 8844 Human Q8IVT5-3 |
| Background: | KSR1 is a location-regulated scaffolding protein connecting MEK to RAF. It promotes MEK and RAF phosphorylation and activity through assembly of an activated signaling complex. By itself, it has no demonstrated kinase activity. |
| Synonyms: | KSR; RSU2 |



[View online »](#)

Product images:



Host: Rabbit
Target Name: KSR1
Sample Tissue: Fetal Lung Lysate
Antibody Dilution: 1.0 μ g/ml

Host: Rabbit
Target Name: KSR1
Sample Type: Fetal Lung lysates
Antibody Dilution: 1.0ug/ml