

## Product datasheet for **TA359822**

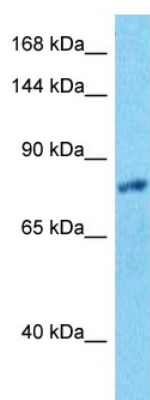
### TTF2 Rabbit Polyclonal Antibody

#### Product data:

Product Type:	Primary Antibodies
Applications:	WB
Reactivity:	Human
Host:	Rabbit
Clonality:	Polyclonal
Immunogen:	The immunogen is a synthetic peptide directed towards the N-terminal region of Human TTF2
Specificity:	<b>Expected reactivity:</b> Human
Formulation:	Liquid. Purified antibody supplied in 1x PBS buffer with 0.09% (w/v) sodium azide and 2% sucrose. <i>Note that this product is shipped as lyophilized powder to China customers.</i>
Concentration:	lot specific
Purification:	Affinity purified
Conjugation:	Unconjugated
Storage:	For short term use, store at 2-8°C up to 1 week. For long term storage, store at -20°C in small aliquots to prevent freeze-thaw cycles.
Stability:	Shelf life: one year from despatch.
Predicted Protein Size:	74kDa
Gene Name:	transcription termination factor 2
Database Link:	<a href="#">Entrez Gene 8458 Human</a> <a href="#">Q9UNY4-2</a>
Background:	This gene encodes a member of the SWI2/SNF2 family of proteins, which play a critical role in altering protein-DNA interactions. The encoded protein has been shown to have dsDNA-dependent ATPase activity and RNA polymerase II termination activity. This protein interacts with cell division cycle 5-like, associates with human splicing complexes, and plays a role in pre-mRNA splicing.
Synonyms:	F2; FKHL15; FOXE1; HuF2; TITF2



[View online »](#)

**Product images:**

Host: Rabbit  
Target Name: TTF2  
Sample Tissue: Fetal Lung Lysate  
Antibody Dilution: 1.0µg/ml

Host: Rabbit  
Target Name: TTF2  
Sample Type: Fetal Lung lysates  
Antibody Dilution: 1.0ug/ml