

Product datasheet for **TA359799**

alpha Sarcoglycan (SGCA) Rabbit Polyclonal Antibody

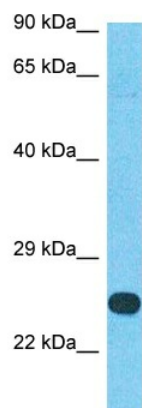
Product data:

Product Type:	Primary Antibodies
Applications:	WB
Reactivity:	Human
Host:	Rabbit
Clonality:	Polyclonal
Immunogen:	The immunogen is a synthetic peptide directed towards the middle region of Human SGCA
Specificity:	Expected reactivity: Human
Formulation:	Liquid. Purified antibody supplied in 1x PBS buffer with 0.09% (w/v) sodium azide and 2% sucrose. <i>Note that this product is shipped as lyophilized powder to China customers.</i>
Concentration:	lot specific
Purification:	Affinity purified
Conjugation:	Unconjugated
Storage:	For short term use, store at 2-8°C up to 1 week. For long term storage, store at -20°C in small aliquots to prevent freeze-thaw cycles.
Stability:	Shelf life: one year from despatch.
Predicted Protein Size:	28kDa
Gene Name:	sarcoglycan alpha
Database Link:	NP_001129169 Entrez Gene 6442 Human Q16586-2
Background:	This gene encodes a component of the dystrophin-glycoprotein complex (DGC), which is critical to the stability of muscle fiber membranes and to the linking of the actin cytoskeleton to the extracellular matrix. Its expression is thought to be restricted to striated muscle. Mutations in this gene result in type 2D autosomal recessive limb-girdle muscular dystrophy. Multiple transcript variants encoding different isoforms have been found for this gene.
Synonyms:	50-DAG; 50DAG; A2; Adhalin; ADL; alpha-sarcoglycan; Alpha-SG; DAG2; DMDA2; Dystroglycan-2; LGMD2D; SCARMD1



[View online »](#)

Product images:



Host: Rabbit
Target Name: SGCA
Sample Tissue: 293T Cell Lysate
Antibody Dilution: 1.0 μ g/ml

Host: Rabbit
Target Name: SGCA
Sample Type: 293T Whole Cell lysates
Antibody Dilution: 1.0 μ g/ml