

Product datasheet for **TA359796**

SFRS7 (SRSF7) Rabbit Polyclonal Antibody

Product data:

Product Type:	Primary Antibodies
Applications:	WB
Reactivity:	Human
Host:	Rabbit
Clonality:	Polyclonal
Immunogen:	The immunogen is a synthetic peptide directed towards the C-terminal region of Human SRSF7
Specificity:	Expected reactivity: Human
Formulation:	Liquid. Purified antibody supplied in 1x PBS buffer with 0.09% (w/v) sodium azide and 2% sucrose. <i>Note that this product is shipped as lyophilized powder to China customers.</i>
Concentration:	lot specific
Purification:	Affinity purified
Conjugation:	Unconjugated
Storage:	For short term use, store at 2-8°C up to 1 week. For long term storage, store at -20°C in small aliquots to prevent freeze-thaw cycles.
Stability:	Shelf life: one year from despatch.
Predicted Protein Size:	26 kDa
Gene Name:	serine/arginine-rich splicing factor 7
Database Link:	Entrez Gene 6432 Human Q16629



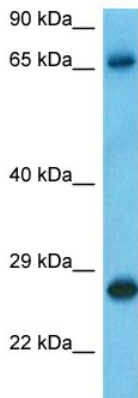
[View online »](#)

Background:

The protein encoded by this gene is a member of the serine/arginine (SR)-rich family of pre-mRNA splicing factors, which constitute part of the spliceosome. Each of these factors contains an RNA recognition motif (RRM) for binding RNA and an RS domain for binding other proteins. The RS domain is rich in serine and arginine residues and facilitates interaction between different SR splicing factors. In addition to being critical for mRNA splicing, the SR proteins have also been shown to be involved in mRNA export from the nucleus and in translation. Two transcript variants encoding different isoforms have been found for this gene.

Synonyms:

9G8; 35kDa; 9430065L19Rik; NX-96; Sfrs7

Product images:

Host: Rabbit
Target Name: SRSF7
Sample Tissue: 721_B Cell Lysate
Antibody Dilution: 2.0µg/ml

Host: Rabbit
Target Name: SRSF7
Sample Type: 721_B Whole Cell
Antibody Dilution: 1.0ug/ml