

Product datasheet for **TA359793**

SFRS4 (SRSF4) Rabbit Polyclonal Antibody

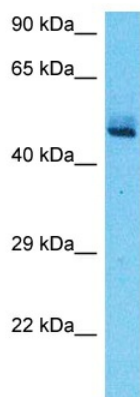
Product data:

Product Type:	Primary Antibodies
Applications:	WB
Reactivity:	Human
Host:	Rabbit
Clonality:	Polyclonal
Immunogen:	The immunogen is a synthetic peptide directed towards the C-terminal region of Human SRSF4
Specificity:	Expected reactivity: Human
Formulation:	Liquid. Purified antibody supplied in 1x PBS buffer with 0.09% (w/v) sodium azide and 2% sucrose. <i>Note that this product is shipped as lyophilized powder to China customers.</i>
Concentration:	lot specific
Purification:	Affinity purified
Conjugation:	Unconjugated
Storage:	For short term use, store at 2-8°C up to 1 week. For long term storage, store at -20°C in small aliquots to prevent freeze-thaw cycles.
Stability:	Shelf life: one year from despatch.
Predicted Protein Size:	54kDa
Gene Name:	serine/arginine-rich splicing factor 4
Database Link:	NP_005617 Entrez Gene 6429 Human Q08170
Background:	This gene encodes a member of the arginine/serine-rich splicing factor family. The encoded protein likely functions in mRNA processing.
Synonyms:	5730499P16Rik; AW550192; MNCb-2616; RGD1561347; Sfrs4; SRp75



[View online »](#)

Product images:



Host: Rabbit
Target Name: SRSF4
Sample Tissue: Fetal Liver Lysate
Antibody Dilution: 1.0 μ g/ml

Host: Rabbit
Target Name: SRSF4
Sample Type: Fetal Liver lysates
Antibody Dilution: 1.0ug/ml