

Product datasheet for **TA359792**

SALL2 Rabbit Polyclonal Antibody

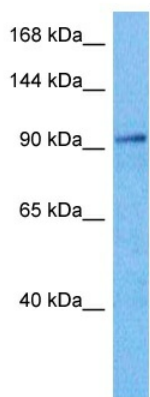
Product data:

Product Type:	Primary Antibodies
Applications:	WB
Reactivity:	Human
Host:	Rabbit
Clonality:	Polyclonal
Immunogen:	The immunogen is a synthetic peptide directed towards the middle region of human SALL2
Specificity:	Expected reactivity: Human
Formulation:	Liquid. Purified antibody supplied in 1x PBS buffer with 0.09% (w/v) sodium azide and 2% sucrose. <i>Note that this product is shipped as lyophilized powder to China customers.</i>
Concentration:	lot specific
Purification:	Affinity purified
Conjugation:	Unconjugated
Storage:	For short term use, store at 2-8°C up to 1 week. For long term storage, store at -20°C in small aliquots to prevent freeze-thaw cycles.
Stability:	Shelf life: one year from despatch.
Predicted Protein Size:	110 kDa
Gene Name:	spalt like transcription factor 2
Database Link:	NP_001278375.1 Entrez Gene 6297 Human Q9Y467
Synonyms:	FLJ10414; FLJ55746; HSAL2; KIAA0360; p150(Sal2); SAL2; ZNF795
Protein Families:	Druggable Genome



[View online »](#)

Product images:



Host: Rabbit
Target Name: SALL2
Sample Type: COLO205 Cell Lysate
Antibody Dilution: 1.0 μ g/ml

Host: Rabbit
Target Name: SALL2
Sample Tissue: COLO205 Whole Cell lysates
Antibody Dilution: 1 μ g/ml