

Product datasheet for **TA359791**

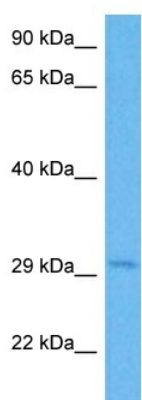
SF2 (SRSF1) Rabbit Polyclonal Antibody

Product data:

Product Type:	Primary Antibodies
Applications:	WB
Reactivity:	Human
Host:	Rabbit
Clonality:	Polyclonal
Immunogen:	The immunogen is a synthetic peptide directed towards the middle region of human SRSF1
Specificity:	Expected reactivity: Human
Formulation:	Liquid. Purified antibody supplied in 1x PBS buffer with 0.09% (w/v) sodium azide and 2% sucrose. <i>Note that this product is shipped as lyophilized powder to China customers.</i>
Concentration:	lot specific
Purification:	Affinity purified
Conjugation:	Unconjugated
Storage:	For short term use, store at 2-8°C up to 1 week. For long term storage, store at -20°C in small aliquots to prevent freeze-thaw cycles.
Stability:	Shelf life: one year from despatch.
Predicted Protein Size:	32 kDa
Gene Name:	serine/arginine-rich splicing factor 1
Database Link:	EAW94488.1 Entrez Gene 6426 Human Q07955-2
Background:	This gene encodes a member of the arginine/serine-rich splicing factor protein family. The encoded protein can either activate or repress splicing, depending on its phosphorylation state and its interaction partners. Multiple transcript variants have been found for this gene. There is a pseudogene of this gene on chromosome 13.
Synonyms:	1110054N12Rik; 5730507C05Rik; 6330415C05Rik; AI482334; Asf; AW491331; Sf2; Sfrs1



[View online »](#)

Product images:

Host: Rabbit
Target Name: SRSF1
Sample Type: 293T Cell Lysate
Antibody Dilution: 1.0µg/ml

Host: Rabbit
Target Name: SRSF1
Sample Tissue: Human 293T Whole Cell lysates
Antibody Dilution: 1 µg/ml