

## Product datasheet for **TA359777**

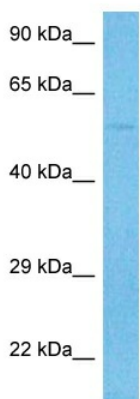
### ORC4L (ORC4) Rabbit Polyclonal Antibody

#### Product data:

Product Type:	Primary Antibodies
Applications:	WB
Reactivity:	Human
Host:	Rabbit
Clonality:	Polyclonal
Immunogen:	The immunogen is a synthetic peptide directed towards the C-terminal region of Human ORC4
Specificity:	<b>Expected reactivity:</b> Human
Formulation:	Liquid. Purified antibody supplied in 1x PBS buffer with 0.09% (w/v) sodium azide and 2% sucrose. <i>Note that this product is shipped as lyophilized powder to China customers.</i>
Concentration:	lot specific
Purification:	Affinity purified
Conjugation:	Unconjugated
Storage:	For short term use, store at 2-8°C up to 1 week. For long term storage, store at -20°C in small aliquots to prevent freeze-thaw cycles.
Stability:	Shelf life: one year from despatch.
Predicted Protein Size:	47kDa
Gene Name:	origin recognition complex subunit 4
Database Link:	<a href="#">Entrez Gene 5000 Human O43929</a>
Background:	The origin recognition complex (ORC) is a highly conserved six subunit protein complex essential for the initiation of the DNA replication in eukaryotic cells. Studies in yeast demonstrated that ORC binds specifically to origins of replication and serves as a platform for the assembly of additional initiation factors such as Cdc6 and Mcm proteins. This gene encodes a subunit of the ORC complex. Several alternatively spliced transcript variants, some of which encode the same protein, have been reported for this gene.
Synonyms:	mMmORC4; Orc4l; Orc4P

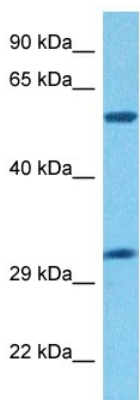


[View online »](#)

**Product images:**


Host: Rabbit  
 Target Name: ORC4  
 Sample Tissue: HeLa Cell Lysate  
 Antibody Dilution: 1.0µg/ml

Host: Rabbit  
 Target Name: ORC4  
 Sample Type: HeLa Whole Cell lysates  
 Antibody Dilution: 1.0ug/ml



Host: Rabbit  
 Target Name: ORC4  
 Sample Type: THP-1 Cell Lysate  
 Antibody Dilution: 1.0µg/ml

Host: Rabbit  
 Target Name: ORC4  
 Sample Tissue: Human THP-1 Whole Cell  
 Antibody Dilution: 1ug/ml