

## Product datasheet for **TA359765**

### **EVI1 (MECOM) Rabbit Polyclonal Antibody**

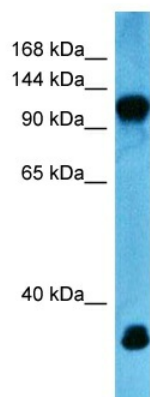
#### **Product data:**

Product Type:	Primary Antibodies
Applications:	WB
Reactivity:	Human
Host:	Rabbit
Clonality:	Polyclonal
Immunogen:	The immunogen for Anti-MECOM antibody is: synthetic peptide directed towards the Middle region of Human EVI1
Specificity:	<b>Expected reactivity:</b> Human
Formulation:	Liquid. Purified antibody supplied in 1x PBS buffer with 0.09% (w/v) sodium azide and 2% sucrose. <i>Note that this product is shipped as lyophilized powder to China customers.</i>
Concentration:	lot specific
Purification:	Affinity purified
Conjugation:	Unconjugated
Storage:	For short term use, store at 2-8°C up to 1 week. For long term storage, store at -20°C in small aliquots to prevent freeze-thaw cycles.
Stability:	Shelf life: one year from despatch.
Predicted Protein Size:	114 kDa
Gene Name:	MDS1 and EVI1 complex locus
Database Link:	<a href="#">Entrez Gene 2122 Human Q03112-5</a>
Background:	The protein encoded by this gene is a transcriptional regulator and oncoprotein that may be involved in hematopoiesis, apoptosis, development, and cell differentiation and proliferation. The encoded protein can interact with CTBP1, SMAD3, CREBBP, KAT2B, MAPK8, and MAPK9. This gene can undergo translocation with the AML1 gene, resulting in overexpression of this gene and the onset of leukemia. Several transcript variants encoding a few different isoforms have been found for this gene.
Synonyms:	D630039M04Rik; Evi-1; Evi1; Jbo; Mds; Mds1; Mds1-Evi1; Prdm3; Znfpr1b1



[View online >](#)

## Product images:



Host: Rabbit  
Target Name: EV11  
Sample Tissue: 293T Cell Lysate  
Antibody Dilution: 1.0 $\mu$ g/ml

Host: Rabbit  
Target Name: EV11  
Sample Type: 293T Whole Cell  
Antibody Dilution: 1.0 $\mu$ g/ml