

Product datasheet for **TA359755**

YIF1A Rabbit Polyclonal Antibody

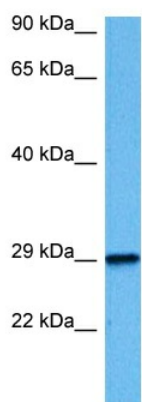
Product data:

Product Type:	Primary Antibodies
Applications:	WB
Reactivity:	Human
Host:	Rabbit
Clonality:	Polyclonal
Immunogen:	The immunogen is a synthetic peptide directed towards the N terminal region of human YIF1A
Specificity:	Expected reactivity: Human
Formulation:	Liquid. Purified antibody supplied in 1x PBS buffer with 0.09% (w/v) sodium azide and 2% sucrose.
Concentration:	lot specific
Purification:	Affinity purified
Conjugation:	Unconjugated
Storage:	For short term use, store at 2-8°C up to 1 week. For long term storage, store at -20°C in small aliquots to prevent freeze-thaw cycles.
Stability:	Shelf life: one year from despatch.
Predicted Protein Size:	32 kDa
Gene Name:	Yip1 interacting factor homolog A, membrane trafficking protein
Database Link:	NP_065203.2 Entrez Gene 10897 Human O95070
Background:	Possible role in transport between endoplasmic reticulum and Golgi.
Synonyms:	54TM; 54TMp; FinGER7; HYIF1P; YIF1; YIF1P
Protein Families:	Transmembrane



[View online »](#)

Product images:



Host: Rabbit
Target Name: YIF1A
Sample Type: HepG2 Cell Lysate
Antibody Dilution: 1.0 μ g/ml

Host: Rabbit
Target Name: YIF1A
Sample Tissue: Human HepG2 Whole Cell lysates
Antibody Dilution: 1 ug/ml