

## Product datasheet for **TA359754**

### KIF3B Rabbit Polyclonal Antibody

#### Product data:

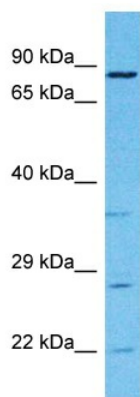
|                         |   |
|-------------------------|---|
| Product Type:           | Primary Antibodies  |
| Applications:           | WB  |
| Reactivity:             | Human   |
| Host:                   | Rabbit  |
| Clonality:              | Polyclonal  |
| Immunogen:              | The immunogen is a synthetic peptide directed towards the C-terminal region of Human KIF3B  |
| Specificity:            | <b>Expected reactivity:</b> Human   |
| Formulation:            | Liquid. Purified antibody supplied in 1x PBS buffer with 0.09% (w/v) sodium azide and 2% sucrose.<br><i>Note that this product is shipped as lyophilized powder to China customers.</i>   |
| Concentration:          | lot specific  |
| Purification:           | Affinity purified   |
| Conjugation:            | Unconjugated  |
| Storage:                | For short term use, store at 2-8°C up to 1 week. For long term storage, store at -20°C in small aliquots to prevent freeze-thaw cycles.   |
| Stability:              | Shelf life: one year from despatch.   |
| Predicted Protein Size: | 82kDa   |
| Gene Name:              | kinesin family member 3B  |
| Database Link:          | <a href="#">NP_004789</a><br><a href="#">Entrez Gene 9371 Human O15066</a>  |
| Background:             | The protein encoded by this gene acts as a heterodimer with kinesin family member 3A to aid in chromosome movement during mitosis and meiosis. The encoded protein is a plus end-directed microtubule motor and can interact with the SMC3 subunit of the cohesin complex. In addition, the encoded protein may be involved in the intracellular movement of membranous organelles. This protein and kinesin family member 3A form the kinesin II subfamily of the kinesin superfamily. |



[View online »](#)

Synonyms: HH0048; KIAA0359

### Product images:



Host: Rabbit  
Target Name: KIF3B  
Sample Tissue: MCF7 Cell Lysate  
Antibody Dilution: 1.0µg/ml

Host: Rabbit  
Target Name: KIF3B  
Sample Type: MCF7 Whole Cell lysates  
Antibody Dilution: 1.0ug/ml