

Product datasheet for **TA359735**

TFE3 Rabbit Polyclonal Antibody

Product data:

Product Type:	Primary Antibodies
Applications:	WB
Reactivity:	Human, Mouse
Host:	Rabbit
Clonality:	Polyclonal
Immunogen:	The immunogen is a synthetic peptide directed towards the middle region of human TFE3
Specificity:	Expected reactivity: Human
Formulation:	Liquid. Purified antibody supplied in 1x PBS buffer with 0.09% (w/v) sodium azide and 2% sucrose. <i>Note that this product is shipped as lyophilized powder to China customers.</i>
Concentration:	lot specific
Purification:	Affinity purified
Conjugation:	Unconjugated
Storage:	For short term use, store at 2-8°C up to 1 week. For long term storage, store at -20°C in small aliquots to prevent freeze-thaw cycles.
Stability:	Shelf life: one year from despatch.
Predicted Protein Size:	63 kDa
Gene Name:	transcription factor binding to IGHM enhancer 3
Database Link:	NP_001269071.1 Entrez Gene 209446 Mouse Entrez Gene 7030 Human P19532



[View online »](#)

Background:

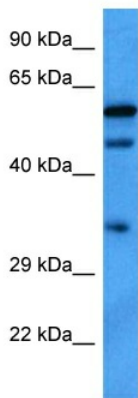
This gene encodes a basic helix-loop-helix domain-containing transcription factor that binds MUE3-type E-box sequences in the promoter of genes. The encoded protein promotes the expression of genes downstream of transforming growth factor beta (TGF-beta) signaling. This gene may be involved in chromosomal translocations in renal cell carcinomas and other cancers, resulting in the production of fusion proteins. Translocation partners include PRCC (papillary renal cell carcinoma), NONO (non-POU domain containing, octamer-binding), and ASPSCR1 (alveolar soft part sarcoma chromosome region, candidate 1), among other genes. Alternative splicing results in multiple transcript variants.

Synonyms:

bHLHe33; RCCP2; TFEA

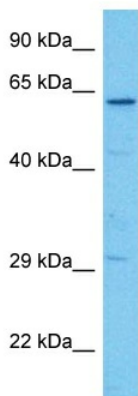
Protein Families:

Druggable Genome, Transcription Factors

Product images:


Host: Rabbit
 Target Name: TFE3
 Sample Type: 293T Cell Lysate
 Antibody Dilution: 1.0µg/ml

Host: Rabbit
 Target Name: TFE3
 Sample Tissue: Human 293T Whole Cell lysates
 Antibody Dilution: 1ug/ml



Host: Rabbit
 Target Name: Tfe3
 Sample Type: Mouse Pancreas Lysate
 Antibody Dilution: 1.0µg/ml

Host: Mouse
 Target Name: TFE3
 Sample Tissue: Mouse Pancreas
 Antibody Dilution: 1ug/ml