

Product datasheet for **TA359731**

SLC7A7 Rabbit Polyclonal Antibody

Product data:

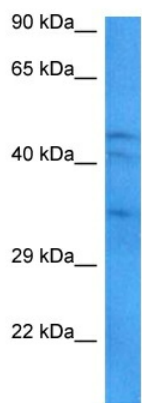
Product Type:	Primary Antibodies
Applications:	WB
Reactivity:	Human
Host:	Rabbit
Clonality:	Polyclonal
Immunogen:	The immunogen is a synthetic peptide directed towards the C terminal region of human SLC7A7
Specificity:	Expected reactivity: Human
Formulation:	Liquid. Purified antibody supplied in 1x PBS buffer with 0.09% (w/v) sodium azide and 2% sucrose.
Concentration:	lot specific
Purification:	Affinity purified
Conjugation:	Unconjugated
Storage:	For short term use, store at 2-8°C up to 1 week. For long term storage, store at -20°C in small aliquots to prevent freeze-thaw cycles.
Stability:	Shelf life: one year from despatch.
Predicted Protein Size:	56 kDa
Gene Name:	solute carrier family 7 member 7
Database Link:	NP_001119577.1 Entrez Gene 9056 Human Q9UM01
Background:	The protein encoded by this gene is the light subunit of a cationic amino acid transporter. This sodium-independent transporter is formed when the light subunit encoded by this gene dimerizes with the heavy subunit transporter protein SLC3A2. This transporter is found in epithelial cell membranes where it transfers cationic and large neutral amino acids from the cell to the extracellular space. Defects in this gene are a cause of lysinuric protein intolerance (LPI). Alternative splicing results in multiple transcript variants.
Synonyms:	LAT3; LPI; MOP-2; OTTHUMP00000164494; y+LAT-1; Y+LAT1



[View online »](#)

Protein Families: Druggable Genome, Transmembrane

Product images:



Host: Rabbit
Target Name: SLC7A7
Sample Type: 721_B Cell Lysate
Antibody Dilution: 1.0µg/ml

Host: Rabbit
Target Name: SLC7A7
Sample Tissue: Human 721_B lymphoblast Whole Cell lysates
Antibody Dilution: 1ug/ml