

Product datasheet for **TA359724**

SLC27A5 Rabbit Polyclonal Antibody

Product data:

Product Type:	Primary Antibodies
Applications:	WB
Reactivity:	Human
Host:	Rabbit
Clonality:	Polyclonal
Immunogen:	The immunogen is a synthetic peptide directed towards the middle region of human SLC27A5
Specificity:	Expected reactivity: Human
Formulation:	Liquid. Purified antibody supplied in 1x PBS buffer with 0.09% (w/v) sodium azide and 2% sucrose. <i>Note that this product is shipped as lyophilized powder to China customers.</i>
Concentration:	lot specific
Purification:	Affinity purified
Conjugation:	Unconjugated
Storage:	For short term use, store at 2-8°C up to 1 week. For long term storage, store at -20°C in small aliquots to prevent freeze-thaw cycles.
Stability:	Shelf life: one year from despatch.
Predicted Protein Size:	75 kDa
Gene Name:	solute carrier family 27 member 5
Database Link:	NP_036386.1 Entrez Gene 10998 Human Q9Y2P5
Background:	The protein encoded by this gene is an isozyme of very long-chain acyl-CoA synthetase (VLCS). It is capable of activating very long-chain fatty-acids containing 24- and 26-carbons. It is expressed in liver and associated with endoplasmic reticulum but not with peroxisomes. Its primary role is in fatty acid elongation or complex lipid synthesis rather than in degradation. This gene has a mouse ortholog.
Synonyms:	ACSB; ACSVL6; BACS; BAL; FACVL3; FATP-5; FATP5; FLJ22987; VLACS-related; VLACSR; VLCS-H2; VLCSH2

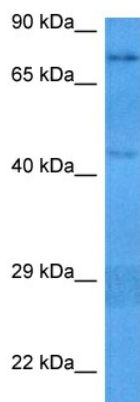


[View online »](#)

Protein Families: Transmembrane

Protein Pathways: Metabolic pathways, PPAR signaling pathway, Primary bile acid biosynthesis

Product images:



Host: Rabbit
Target Name: SLC27A5
Sample Type: 721_B Cell Lysate
Antibody Dilution: 1.0 μ g/ml

Host: Rabbit
Target Name: SLC27A5
Sample Tissue: Human 721_B lymphoblast Whole Cell lysates
Antibody Dilution: 1 μ g/ml