

Product datasheet for **TA359716**

RBM10 Rabbit Polyclonal Antibody

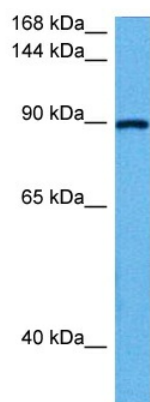
Product data:

Product Type:	Primary Antibodies
Applications:	WB
Reactivity:	Human
Host:	Rabbit
Clonality:	Polyclonal
Immunogen:	The immunogen is a synthetic peptide directed towards the N terminal region of human RBM10
Specificity:	Expected reactivity: Human
Formulation:	Liquid. Purified antibody supplied in 1x PBS buffer with 0.09% (w/v) sodium azide and 2% sucrose. <i>Note that this product is shipped as lyophilized powder to China customers.</i>
Concentration:	lot specific
Purification:	Affinity purified
Conjugation:	Unconjugated
Storage:	For short term use, store at 2-8°C up to 1 week. For long term storage, store at -20°C in small aliquots to prevent freeze-thaw cycles.
Stability:	Shelf life: one year from despatch.
Predicted Protein Size:	93 kDa
Gene Name:	RNA binding motif protein 10
Database Link:	NP_001191395.1 Entrez Gene 8241 Human P98175-3
Background:	This gene encodes a nuclear protein that belongs to a family proteins that contain an RNA-binding motif. The encoded protein associates with hnRNP proteins and may be involved in regulating alternative splicing. Defects in this gene are the cause of the X-linked recessive disorder, TARP syndrome. Alternate splicing results in multiple transcript variants.
Synonyms:	DXS8237E; GPATC9; GPATCH9; KIAA0122; MGC997; MGC1132; S1-1; ZRANB5
Protein Families:	Druggable Genome



[View online >](#)

Product images:



Host: Rabbit
Target Name: RBM10
Sample Type: Thymus Tumor Lysate
Antibody Dilution: 1.0 μ g/ml

Host: Rabbit
Target Name: RBM10
Sample Tissue: Human Thymus Tumor lysates
Antibody Dilution: 1 μ g/ml